

Achievements and Outlook for:

Nimmo High Plains
Dargo High Plains
Hamersley Station
Weeli Wolli

OzFlux Meeting
June 13, 2011
CSIRO Floreat, WA

Dr Robert Simpson
Faculty of Agriculture, Food and Natural Resources

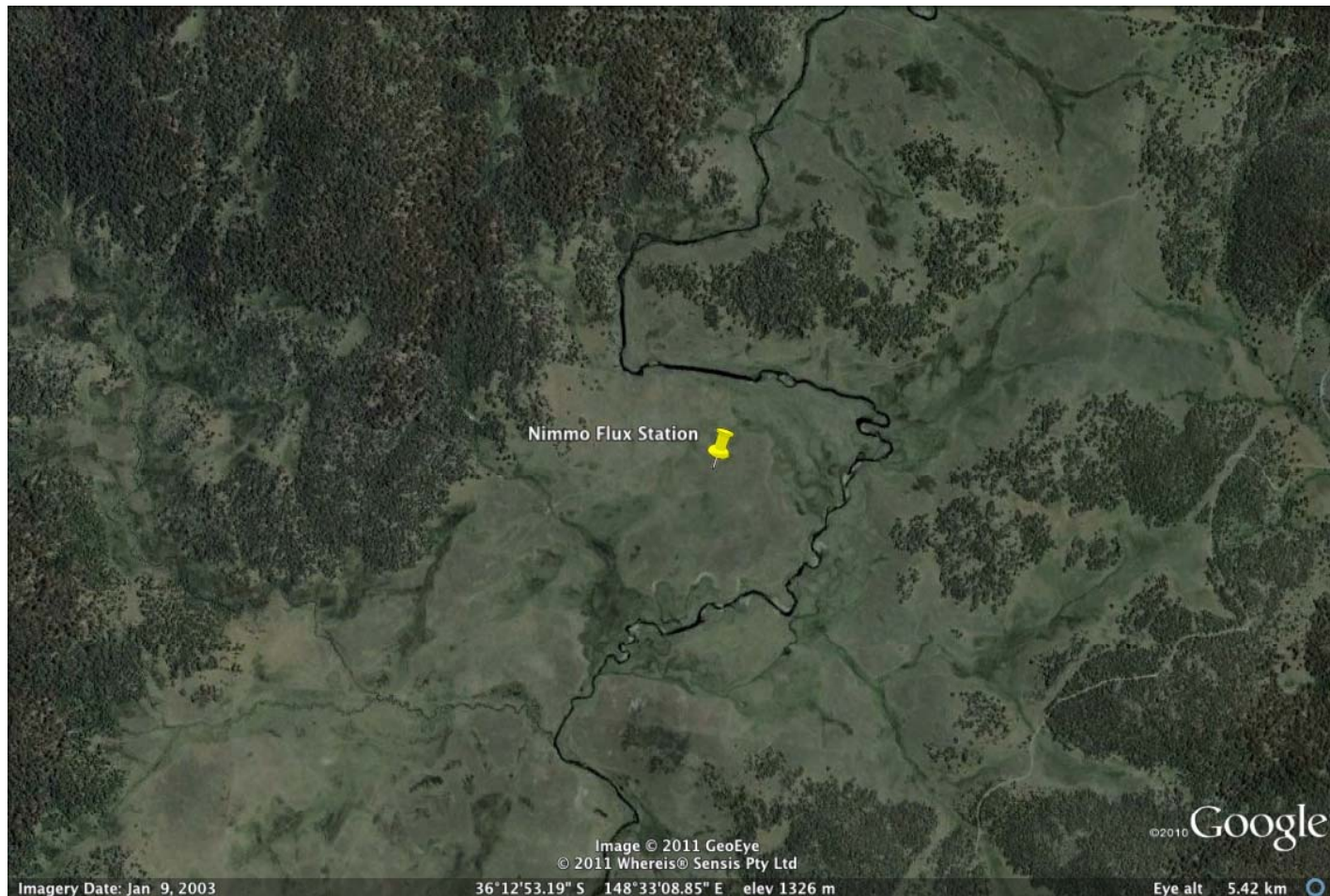


- › Established as a paired site in May 2007
- › High elevation sites
- › Both seasonally grazed
- › Loose association with Bushfire CRC-Highfire project

- › Established as a paired site in May 2007



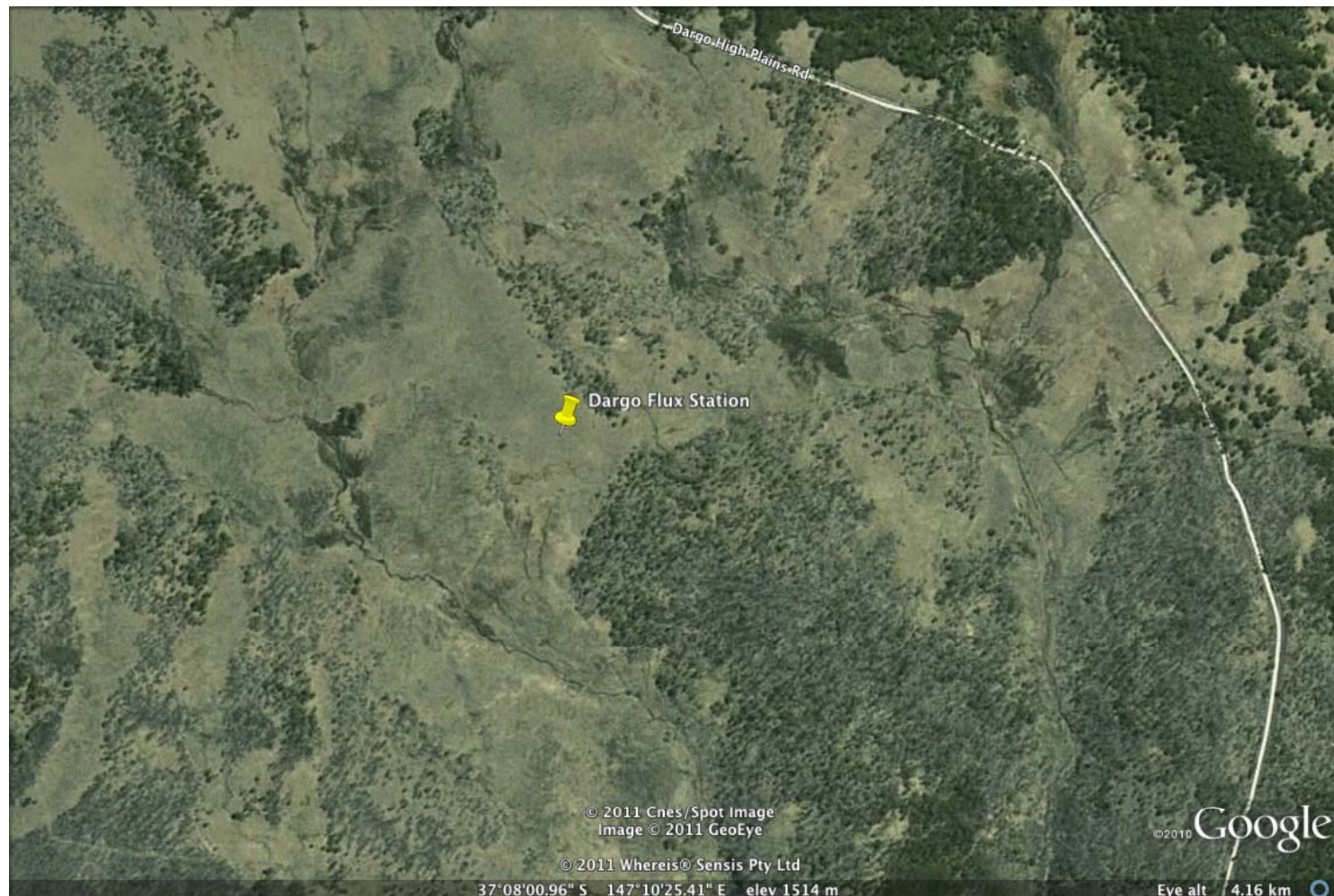
- › Established as a paired site in May 2007



- › Established as a paired site in May 2007



- › Established as a paired site in May 2007



- › Established as a paired site in May 2007



Technical Issues/Improvements

- › Data loss due to open path configuration and inaccessibility of sites over winter



Technical Issues/Improvements

- › Data loss due to open path configuration and inaccessibility of sites over winter
 - › Through TERN II we hope to move to modified open-path instrumentation
 - › We have interfaced a small PC to each flux station. This has advantages for:
 - › Stability of remote communications
 - › Daily backups and archiving of data



Technical Issues/Improvements

- › Data loss due to open path configuration and inaccessibility of sites over winter
 - › Through TERN II we hope to move to modified open-path instrumentation
 - › We have interfaced a small PC to each flux station. This has advantages for:
 - › Stability of remote communications
 - › Daily backups and archiving of data
 - › Investment in gradient measures of soil moisture and temperature

Technical Issues/Improvements

- › Data loss due to open path configuration and inaccessibility of sites over winter
 - › Through TERN II we hope to move to modified open-path instrumentation
 - › We have interfaced a small PC to each flux station. This has advantages for:
 - › Stability of remote communications
 - › Daily backups and archiving of data
 - › Investment in gradient measures of soil moisture and temperature
 - › Campaign style ancillary measures include soil GHG fluxes and some scintillometry



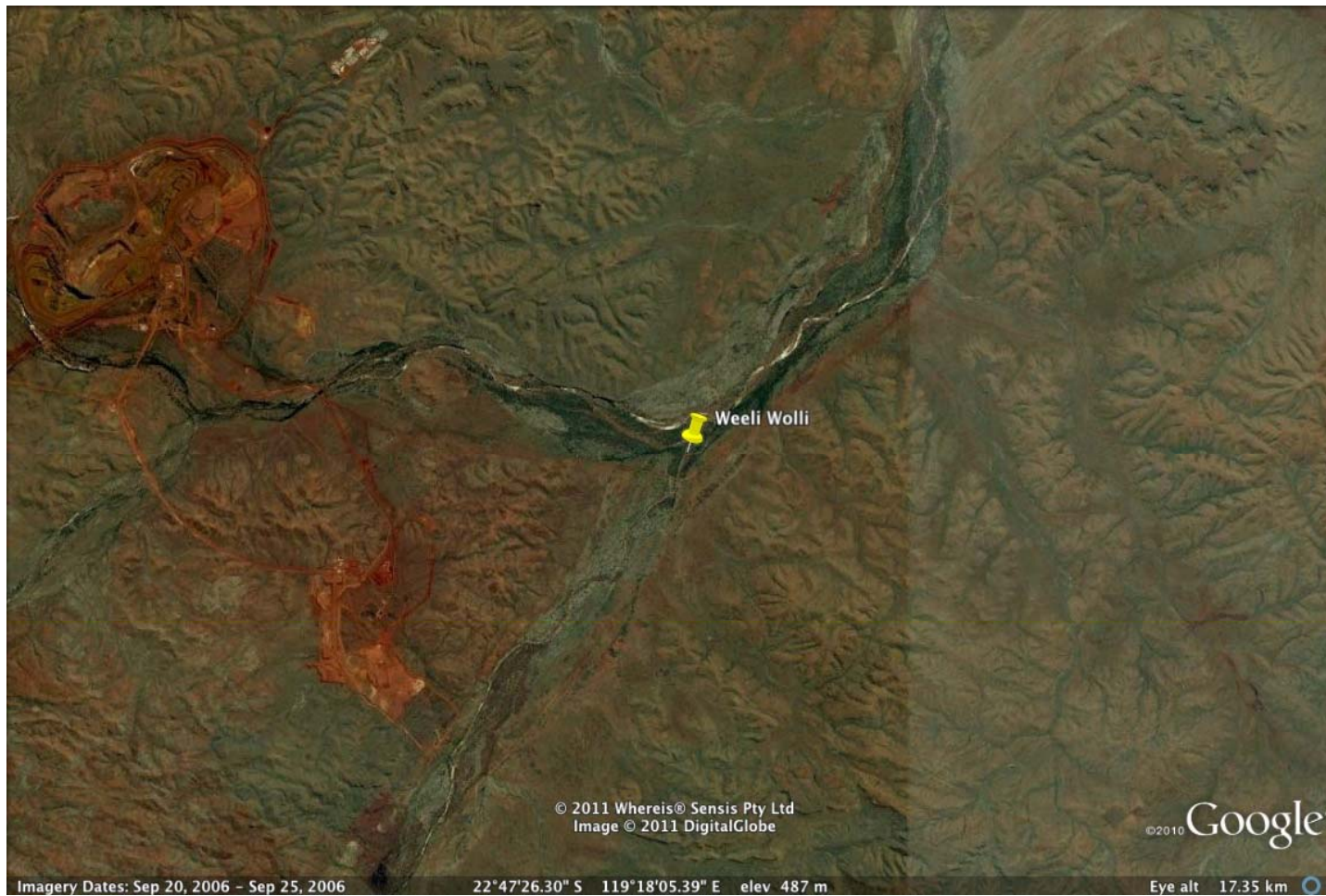
Sub-alpine grassland sites



- › Significant issues related to the establishment of these sites



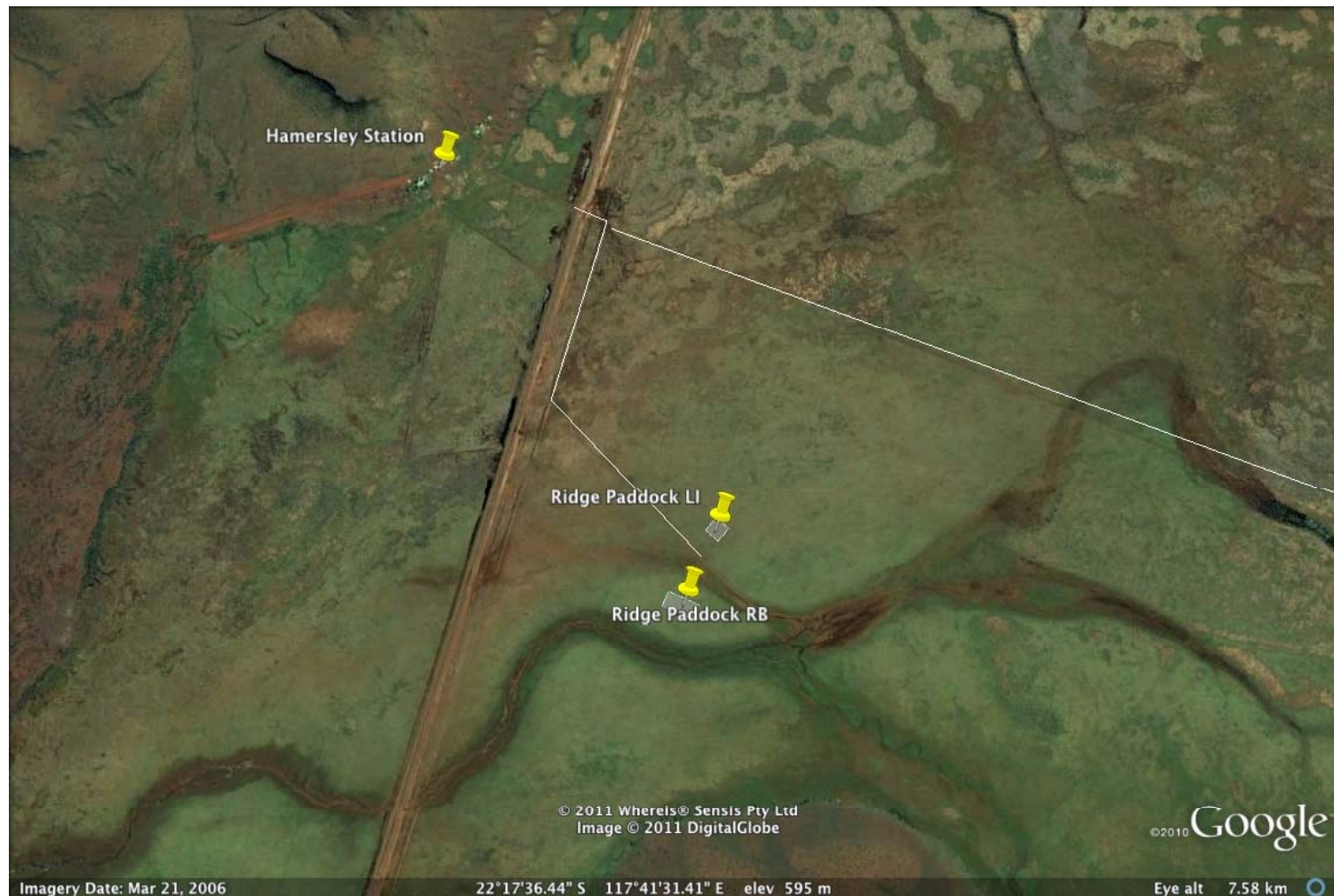
- › Originally established to quantify effect of ‘dewatering’ on coolabah woodlands



- › Originally established to quantify effect of ‘dewatering’ on coolabah woodlands
- › Significant issues related to the establishment of these sites
- › Weeli Wolli first established June 2008
- › Companion tower established July 2008 then promptly collapsed
- › Currently negotiating with RTIO on an acceptable replacement tower design
- › Companion site abandoned in favour of Hamersley station



- › Hamersley station site established September 2010



- › Hamersley station site established September 2010
- › Native C4 Themeda grassland
- › Long-term exclusion plots established by UWA
- › Station currently still in beta testing
- › Access to site has been severely limited
- › Outlook is bright for better access to site
- › Remote communication package in final testing, ready for deployment in 4-6 weeks

- › Casey Trust
- › Treasure family

